



# DataLogger®

RR Consumables

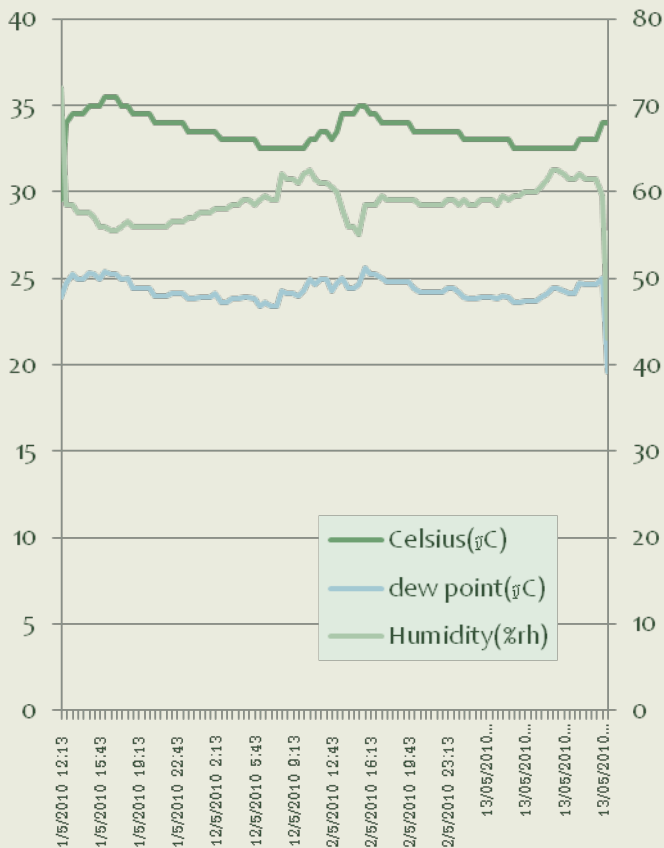


# Direct read out of the stored data



## Or export to an Excel file

### Storage



Storage	Time	Celsius (°C)	Humidity (%RH)	Dew point(°C)	Serial Number
1	11/5/2010 12:13	29.5	72	23.9	10012018
2	11/5/2010 12:43	34	58.5	24.7	
3	11/5/2010 13:13	34.5	58.5	25.2	
4	11/5/2010 13:43	34.5	57.5	24.9	
5	11/5/2010 14:13	34.5	57.5	24.9	
6	11/5/2010 14:43	35	57.5	25.3	
7	11/5/2010 15:13	35	57	25.2	
8	11/5/2010 15:43	35	56	24.9	
9	11/5/2010 16:13	35.5	56	25.4	
10	11/5/2010 16:43	35.5	55.5	25.2	
11	11/5/2010 17:13	35.5	55.5	25.2	
12	11/5/2010 17:43	35	56	24.9	
13	11/5/2010 18:13	35	56.5	25	
14	11/5/2010 18:43	34.5	56	24.4	
15	11/5/2010 19:13	34.5	56	24.4	
16	11/5/2010 19:43	34.5	56	24.4	
17	11/5/2010 20:13	34.5	56	24.4	
18	11/5/2010 20:43	34	56	24	
19	11/5/2010 21:13	34	56	24	
20	11/5/2010 21:43	34	56	24	
21	11/5/2010 22:13	34	56.5	24.1	
22	11/5/2010 22:43	34	56.5	24.1	
23	11/5/2010 23:13	34	56.5	24.1	
24	11/5/2010 23:43	33.5	57	23.8	
25	12/5/2010 0:13	33.5	57	23.8	
26	12/5/2010 0:43	33.5	57.5	23.9	
27	12/5/2010 1:13	33.5	57.5	23.9	
28	12/5/2010 1:43	33.5	57.5	23.9	
29	12/5/2010 2:13	33.5	58	24.1	
30	12/5/2010 2:43	33	58	23.6	
31	12/5/2010 3:13	33	58	23.6	
32	12/5/2010 3:43	33	58.5	23.8	
33	12/5/2010 4:13	33	58.5	23.8	
34	12/5/2010 4:43	33	59	23.9	
35	12/5/2010 5:13	33	59	23.9	
36	12/5/2010 5:43	33	58.5	23.8	





## Features

0 – 100% RH measurement range

-35 - +80°C measurement range

Dew point indication

USB interface for setup & data download

Download data & graph to excel

User programmable alarm thresholds for %RH and Temperature

Status indication through green & red LED's

High contrast LCD display

Replaceable internal lithium battery

## Input possibilities

Unique logger name

°C or °F

Logging rate: 10s -1m – 5m – 30m – 1hr – 6hr – 12hr

High & low alarms

Immediate, delayed and pushed to start logging

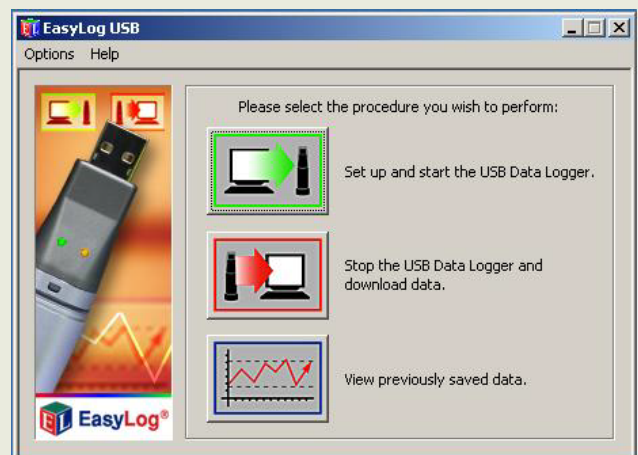
Display on, intermediary or off

Data rollover or stopped

## Accuracy

% RH +/- 3%

°C +/-0.5°C





## A multitude of different uses:

As a temperature and relative humidity logger during different research setups.

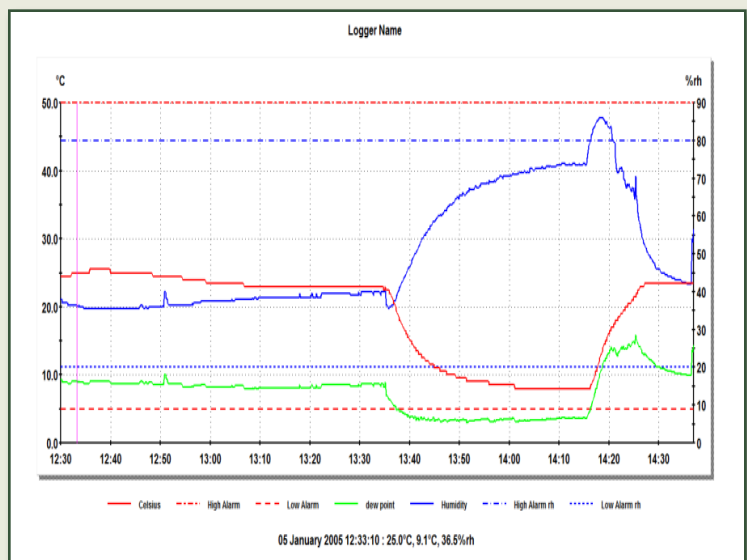
As a seed storage logger in order to check differences in temperature and relative humidity during this seed storage.

As a logger during the seed production, indicating temperature and RH during the different phases of the seed production.

As a logger during transport in order to check possible quality loss.

As a controller during seed drying for overheating (temperature) or efficiency of drying (RH measurement).

An easy to use graph, with instant read-out on each moment (pointer data)



**Rhino Research Group**

Contact person: **Johan Van Asbrouck**

Email: [johan@rhino-research.com](mailto:johan@rhino-research.com)

Cell phone: +66 81 971 2411

